

## K3 + T3 wireless remote RGB controller



CE FC RoHS (FCC ID: 2APBAT1)

### Technical Specs:

#### K3: RGB Panel

- Input Voltage : DC12V~24V
- Load Current : 4Ax3CH MAX 12A
- Optional output frequency : 0.5K, 1K, 2K, 4K, 8K
- Grey Scale Level : 2048Levelsx3
- Max Output Power : 144W(12V)/288W(24V)
- Working Temperature : -20°C ~ 55°C
- Dimensions : L86×W86×H51 (mm)
- Weight(N.W) : 130g

#### Wireless Remote(T3)

- Input Voltage : 3V(CR2032)
- Working Frequency : 433.92MHZ
- Remote Distance : 30M
- Working Temperature : -20°C ~ 55°C
- Dimensions : L106×W56×H9(mm)
- Weight(N.W) : 40g

— 1 —

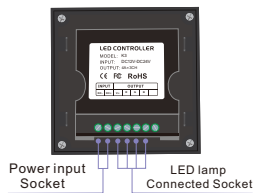
K3 dynamic mode: (call out the dynamic mode only by T3 remote control)

NO.	MODE	NO.	MODE
1	RGB CHANGE	2	COLOR CHANGE
3	WHITE FLASH	4	RGB FADE
5	COLOR FADE	6	RG FADE
7	RB FADE	8	GB FADE
9	WHITE FADE	10	ALL MODE CYCLE

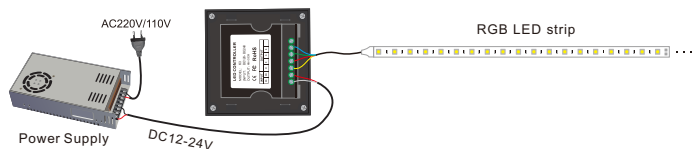
#### Notice:

1. The digital tube is inactive if no settings are made after 1 minute, does not affect the output effect. re-operate the rotary to turn it on.
2. Restore factory defaults: In the state of power off, long press the rotary and power on, after 0.5 second, release the rotary, the controller is on. after restoring factory defaults, the K series controller and the remote need to rematch the ID.

#### Green Block:

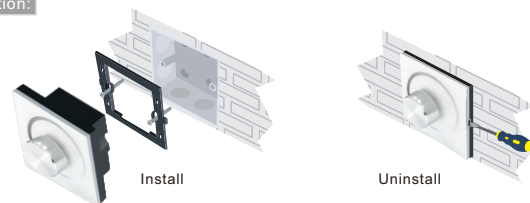


#### Wiring Diagram:



— 3 —

#### Installation:



#### Rotary Functions:

##### Rotary Function :

The Learning ID Method of Remote Control: Remote control has been matched to the receiver before delivery, if deleted accidentally, you can learn ID as follow.

Learning ID: In the state of power off, long press rotary for 3 seconds, when the digital tube displays 'FF', then press any key on the remote control. The digital tube flashes 3 times, and the controller is ON, the remote and its controller is matched.

##### Note:

The controller only matches to the same type remote control, the controller is inactive if no settings are made to it after 1 minute, press any key to turn it on before normal operation.

#### K3: RGB Panel



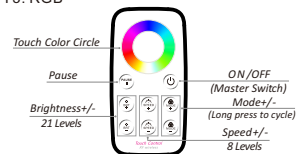
✘ Short press: turn on/off LED controller

✘ Long press: in the state of power on, long press to select the output frequency, F0.5=0.5K, F1.0=1.0K, F2.0=2.0K, F4.0=4.0K, F98.0=8.0K.

✘ Double-click: switch between RGB mode and Dimming mode.

✘ Adjust rotary: in dimming mode, increase or decrease brightness, range from 1~100; in RGB mode, adjust the RGB color, range from C01-C64.

#### T3: RGB



— 2 —

#### After-Sales:

From the day you purchase our products within 3 years, if being used properly in accordance with the instruction, and quality problems occur, we provide free repair or replacement services except the following cases:

1. Any defects caused by wrong operations.
2. Any damages caused by inappropriate power supply or abnormal voltage.
3. Any damages caused by unauthorized removal, maintenance, modifying circuit, incorrect connections and replacing chips.
4. Any damages due to transportation, breaking, flooded water after the purchase.
5. Any damages caused by earthquake, fire, flood, lightning strike etc force majeure of natural disasters.
6. Any damages caused by negligence, inappropriate storing at high temperature and humidity environment or near harmful chemicals.
7. Product has been updated.

#### Kindly Reminder:

##### 1. Power Source Selection

Power source must be DC constant voltage type of power supply. Due to the efficient output in some power supplies are only 80% of total, so please select at least 20% higher output power supply than the consumption of LED lights.

— 4 —